

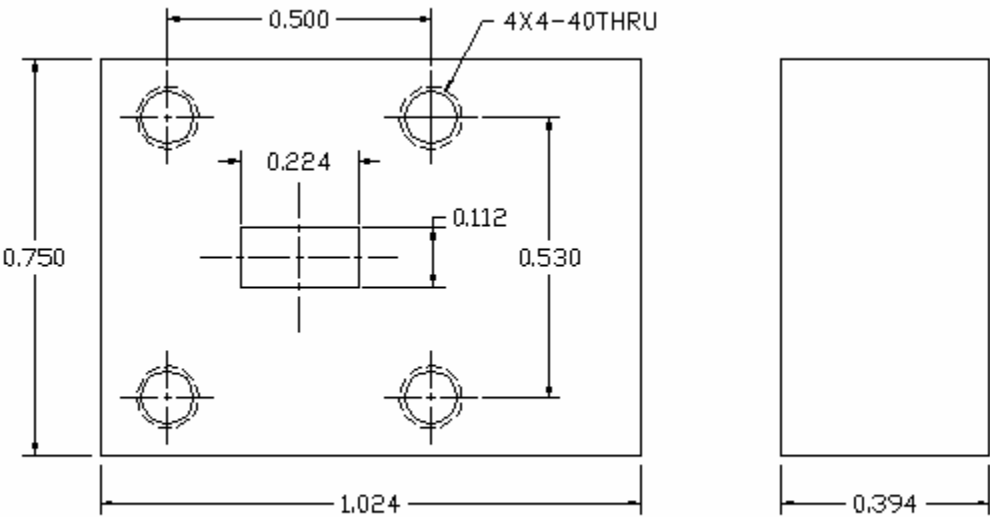
Key Features:

- Frequency range: 33~50.0GHz, bandwidth up to 2GHz
- WR-22 waveguide
- Power handling >5Watts CW forward, >5Watts CW Reverse
- Customer specify center frequency and bandwidth

Electrical Specifications

Part No.	Freq Range MHz	Insertion Loss, dB	Reverse Isolation, dB	VSWR	Forward Power, Watts	Reverse Power, Watts	Temp. Range, °C
F3360-4150-02	41.0~42.0	0.6 Max	≥ 25	≤1.2	≥ 5	≥ 5	-40 ~ +70

Mechanical Structure:



All units in inches

Ordering Information:

