

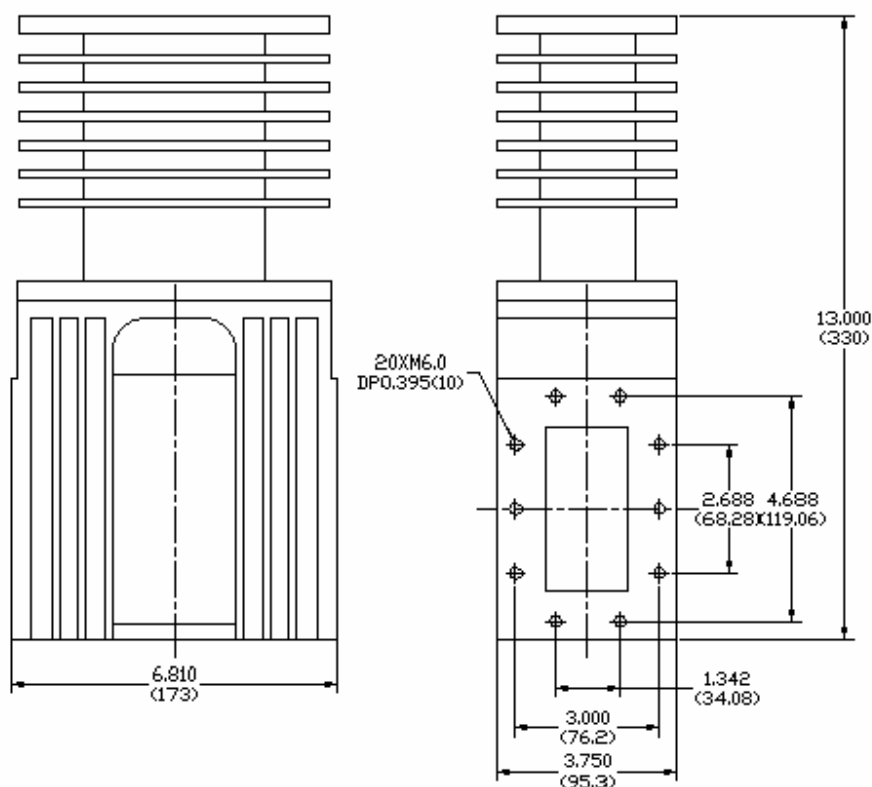
**Key Features:**

- Frequency range: 2.20~3.30GHz, bandwidth up to 250MHz
- WR-340 waveguide, Cover flange
- Power handling >1000Watts CW, 10kWatts pulse, reverse termination 150 Watts
- Customer specify center frequency and bandwidth

**Electrical Specifications**

Part No.	Freq Range MHz	Insertion Loss, dB	Reverse Isolation, dB	VSW R	FWD Power, Watt CW/Pulse	Reverse Power Watts	Temp. Range, °C
F3046-0252-10	2.40~2.65	0.3 max	≥ 23 min	≤1.15	1k/10k	150	0 ~ +50
F3046-0295-07	2.85~3.05	0.3 max	≥ 20 min	≤1.25	1k/10k	150	-30 ~ +55

**Mechanical Structure:**



All units in inches

**Ordering Information:**

